

# Product Catalog



Onninen, Norway

LedlightGroup





Ledlight Group is an innovative company that designs, develops, manufactures and markets lamps based on LED technology for high-end applications in the professional market, with particular focus on sport, storage, industrial and marine applications. Established in 2005, Ledlight Group encompasses industry knowledge and international experience in providing LED lighting solutions. Ledlight Group is owned by Agder Energi, which is one of the leading companies in the Norwegian renewable energy sector. The group's operations include the production, distribution and sale of energy and energy-related services, including Ledlight Group.

**LedlightGroup**

Ole Deviks vei 6B, 0666 Oslo,  
Norway  
post@llg.no  
+47 40 00 63 26

[www.ledlightgroup.com](http://www.ledlightgroup.com)

# Table of content

CrystalLed™ Basic.....4

CrystalLed™ High Tower .....6

CrystalLed™ Industrial & ID .....8

CrystalLed™ Marine .....10

CrystalLed™ Sports .....12

CrystalLed™ Storage .....14

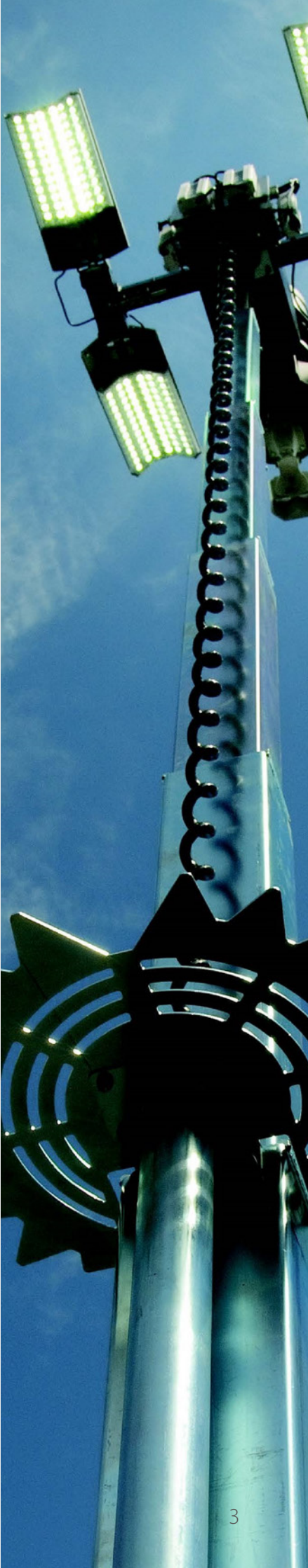
CrystalLed™ Specialized .....16

Brackets.....20

Housing .....21

Dali.....22

SmartGrid .....23





Ledlight Group provides LED light solutions to the professional market, with particular focus on sports, storage, high tower and industrial applications. The CrystalLed™ series is designed to replace conventional lighting and offers unparalleled benefits to lower energy cost, reduce maintenance, and provide improved lighting performance.

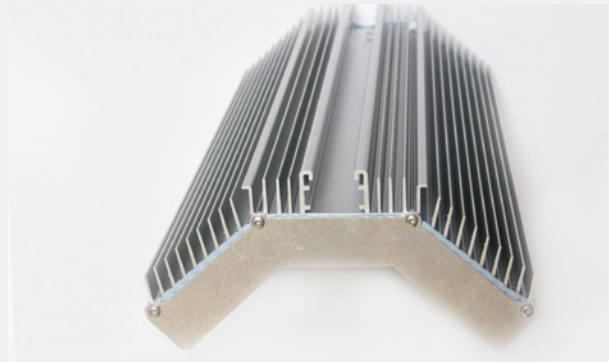
The basic lamps consist of only the CrystalLed™ light engine. See other products, brackets and housing for more options.

“With LED, we are eliminating the unnecessary cost of replacing lamps, while also implementing an environmentally friendly solution that provides much better lighting. When we switched to CrystalLed™ lamps, the energy costs dropped dramatically. We have never used as little kWh as we are using now.

Arild Aamot, Operational and Technical Manager, Onninen.



Port of Århus, Denmark



## General technical data

With 4500K Cree Diodes

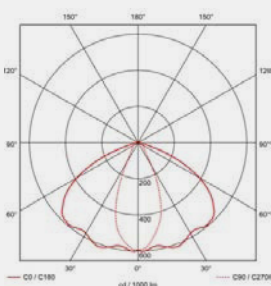
	CrystalLed™ 24	CrystalLed™ 48	CrystalLed™ 72	CrystalLed™ 72	CrystalLed™ 96
Product number	108131	108133	108135	108137	108139
EL number	3507197	3507199	3507301	3508826	3508828
Driver	450mA	450mA	450mA	700mA	700mA
Power	40W	71W	104W	160W	208W
Total lumen output	4576Lm	8864Lm	13231Lm	18953Lm	23861Lm
IP	65 / 67	65 / 67	65 / 67	65 / 67	65 / 67

With 6000K Cree Diodes

	CrystalLed™ 24	CrystalLed™ 48	CrystalLed™ 72	CrystalLed™ 72	CrystalLed™ 96
Product number	108130	108132	108134	108136	108138
EL number	3507196	3507198	3507300	3508827	3508829
Driver	450mA	450mA	450mA	700mA	700mA
Power	40W	71W	104W	160W	208W
Total lumen output	4864Lm	9997Lm	13453Lm	20277Lm	26913Lm
IP	65 / 67	65 / 67	65 / 67	65 / 67	65 / 67

2200K / 3000K Cree Diodes can be order on request.

60 degree standard lenses, 25 degree or mix lenses on request.



- High quality Cree XTE-HE diodes.
- Light engine is made with Norwegian aluminium from Hydral.
- Driver from market-leading company Inventronics.

- Easily installed due to its low weight, flexible mounting options and easy click-on installation system.
- IP 65/67



CrystalLed™ lamps are ideal for hazardous and rough conditions, which makes it a great fit at docks, outdoor production locations and other industrial sites.

The outdoor LED lighting application can be positioned up to 35 meter height, providing precise light distribution in all types of weather. The robust lamp ensures stability, and the low weight allows for easy installation and management. This also contributes to a safer industrial environment.

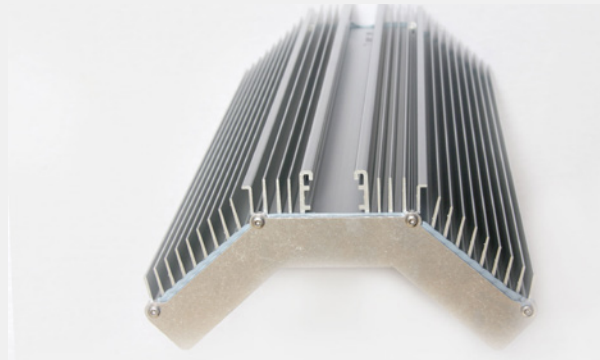
Longevity is a key feature of CrystalLed™ lamps and the expected life span is between 50.000 to 100.000 hours.

“Reco uses the latest CrystalLed™ lamps to ensure maximum light distribution from the high towers. We have experienced that this results in more light output than any other lamp currently available in the market.

Rob Reigwein, CEO, Reco



Port of Esbjerg, Denmark



## General technical data

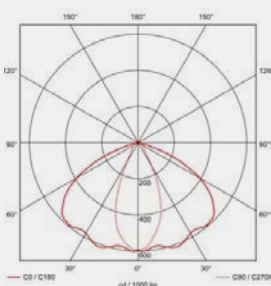
With 4500K Cree Diodes

	CrystalLed™ Tower 48	CrystalLed™ Tower 72	CrystalLed™ Tower 96	CrystalLed™ Tower 96
Product number	108111	108114	108171	108171-1
EL number	3507343	3508820	3508822	-
Driver	700mA	700mA	700mA	1050mA
Power	109W	160W	208W	302W
Total lumen output	13298Lm	18953Lm	23861Lm	31106Lm
IP	65 / 67	65 / 67	65 / 67	65 / 67

With 6000K Cree Diodes

	CrystalLed™ Tower 48	CrystalLed™ Tower 72	CrystalLed™ Tower 96	CrystalLed™ Tower 96
Product number	108087	108049	108170	108170-1
EL number	3507343	3508820	3508822	-
Driver	700mA	700mA	700mA	1050mA
Power	109W	160W	208W	302W
Total lumen output	14170Lm	20277Lm	26914Lm	34730Lm
IP	65 / 67	65 / 67	65 / 67	65 / 67

2200K / 3000K Cree Diodes can be order on request.



- High quality Cree XTE-HE diodes.
- Light engine is made with Norwegian aluminium from Hydal.
- Driver from market-leading company Inventronics.

- Easily installed due to its low weight, flexible mounting options and easy click-on installation system.
- IP 65/67



CrystalLed™ is designed to replace conventional lighting in a wide variety of indoor and outdoor applications. With world-leading diodes from Cree and an intelligently designed light engine, CrystalLed™ lowers maintenance cost and saves energy, whilst also providing great improvement in lighting performance.

The ID system allows for drivers to be placed inside of the mounting bracket.

The lamp's robust profile, low weight and versatile mounting options makes it particularly suitable for industrial applications, including:

- Industrial sites e.g. production facilities
- Harbours, cranes, secure areas
- Parking, Bridges, tunnel, rail & street
- Airport structures
- Other buildings, infrastructure and general area lighting



Top Logistics, Holland



## General technical data - Industrial | 60 degree standard lenses, 25 degree or mix lenses on request

With 4500K Cree Diodes	CrystalLed™ Industrial 24	CrystalLed™ Industrial 48	CrystalLed™ Industrial 72	CrystalLed™ Industrial 96
Product number	108165	108167	108169	108171
EL number	3508809	3508811	3508813	3507374
Driver	450mA	450mA	450mA	700mA
Power	40W	71W	104W	208W
Total lumen output	4576Lm	8864Lm	13231Lm	23861Lm
IP	65 / 67	65 / 67	65 / 67	65 / 67

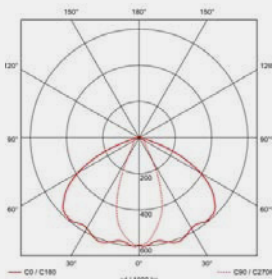
With 6000K Cree Diodes	CrystalLed™ Industrial 24	CrystalLed™ Industrial 48	CrystalLed™ Industrial 72	CrystalLed™ Industrial 96
Product number	108164	108166	108168	108170
EL number	3508809	3508811	3508813	3507374
Driver	450mA	450mA	450mA	700mA
Power	40W	71W	104W	208W
Total lumen output	4864Lm	9997Lm	13453Lm	26914Lm
IP	65 / 67	65 / 67	65 / 67	65 / 67

## General technical data - ID | 60 degree standard lenses, 25 degree or mix lenses on request

With 4500K Cree Diodes	CrystalLed™ ID 24	CrystalLed™ ID 48	CrystalLed™ ID 72
Product number	108101	108104	108107
EL number	3508815	3508817	3508819
Driver	450mA	450mA	450mA
Power	40W	71W	104W
Total lumen output	4576Lm	8864Lm	13231Lm
IP	65 / 67	65 / 67	65 / 67

With 6000K Cree Diodes	CrystalLed™ ID 24	CrystalLed™ ID 48	CrystalLed™ ID 72
Product number	108100	108103	108106
EL number	3508815	3508817	3508819
Driver	450mA	450mA	450mA
Power	40W	71W	104W
Total lumen output	4864Lm	9997Lm	13453Lm
IP	65 / 67	65 / 67	65 / 67

2200K / 3000K Cree Diodes can be order on request.



- High quality Cree XTE-HE diodes.
- Light engine is made with Norwegian aluminium from Hydal.
- Driver from market-leading company Inventronics.
- Patented ID driver from Ledlight Group.
- Easily installed due to its low weight, flexible mounting options and easy click-on installation system.
- Can be delivered with DALI dimming.
- IP 65/67

Ledlight Group has designed a tailored LED product to serve the maritime segment. CrystalLed™ Marine is especially designed for rough and hazardous conditions.

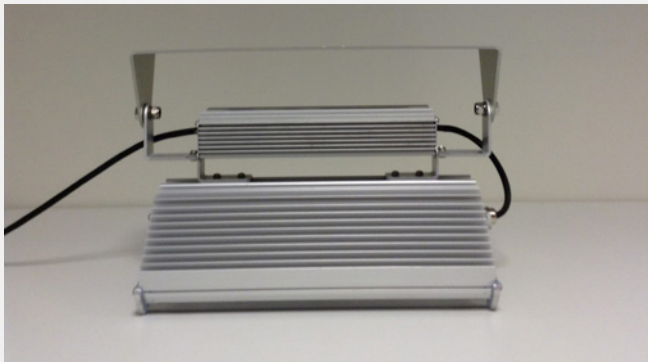
The lamps can be delivered with several different mounting options and in a range of different varieties suited to every environment.

Product features include:

- Salt water resistant; bracket and nipple in stainless steel.
- Reinforced bracket makes the lamp more resistant to rough conditions and ensures stability in all types of weather.
- Double isolated, oil resistant cable.
- The fixture is made of extruded aluminium.
- Supplied with cable and Hensel box.







## General technical data

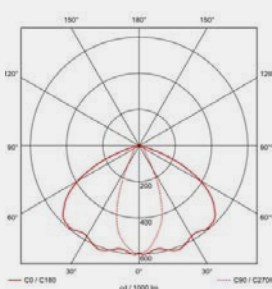
With 4500K Cree Diodes

	CrystalLed™ Marine 24	CrystalLed™ Marine 48	CrystalLed™ Marine 72	CrystalLed™ Marine 96	CrystalLed™ Marine 48 Bracket with mounted driver	CrystalLed™ Marine 72 Bracket with mounted driver
Product number	108182-1	108156-1	108180-1	108181-1	-	-
EL number	-	3507339	3508841	-	3507339	3508841
Driver	450mA	450mA	450mA	700mA	450mA	450mA
Power	40W	71W	104W	208W	71W	104W
Total lumen output	4576Lm	8864Lm	13231Lm	23861Lm	8864Lm	13231Lm
IP	65 / 67	65 / 67	65 / 67	65 / 67	65 / 67	65 / 67

With 6000K Cree Diodes

	CrystalLed™ Marine 24	CrystalLed™ Marine 48	CrystalLed™ Marine 72	CrystalLed™ Marine 96	CrystalLed™ Marine 48 Bracket with mounted driver	CrystalLed™ Marine 72 Bracket with mounted driver
Product number	108182	108156	108180	108181	-	-
EL number	3507338	3507339	3508841	3507340	-	-
Driver	450mA	450mA	450mA	700mA	450mA	450mA
Power	40W	71W	104W	208W	71W	104W
Total lumen output	4864Lm	9997Lm	13453Lm	26913Lm	9997Lm	13453Lm
IP	65 / 67	65 / 67	65 / 67	65 / 67	65 / 67	65 / 67

2200K / 3000K Cree Diodes can be order on request.



- High quality Cree XTE-HE diodes.
- Light engine is made with Norwegian aluminium from Hydal.
- Driver from market-leading company Inventronics.

- Easily installed due to its low weight, flexible mounting options and easy click-on installation system.
- Can be delivered with DALI dimming.
- IP 65/67

CrystalLed™ lamps are ideal for situations where the light is crucial for performance.

With many installations in the sport segment, ranging from tennis courts and multi-purpose sports halls to swimming pools, CrystalLed™ lamps have proven to provide better light output while keeping maintenance cost to a minimum.

A tailored CrystalLed™ solution is highly energy- and cost efficient, environmentally friendly, and Dali dimming allows the sports venue to manage the light as needed.

I did thorough research when we decided to replace the lighting in the multi-purpose sports hall. I have previously been sceptical about LED lighting, but now the quality is better and there are many advantages of LED versus traditional lighting. Since installing CrystalLed™ lamps, we have experienced huge savings. And the lighting is much better.

Bjørn Langjordet, Responsible for Electrical and Energy, Horten Municipality/Holtanhallen



Holtanhallen, Norway





## General technical data

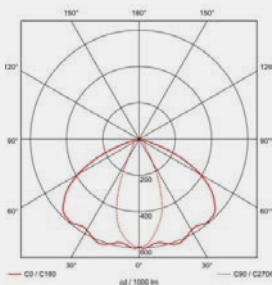
With 4500K Cree Diodes

	CrystalLed™ ARC 48	CrystalLed™ ARC 72	CrystalLed™ ARC 48 w/diffusor	CrystalLed™ ARC 72 w/diffusor
Product number	108118	108120	108129	108128
EL number	3508801	3508805	3508801	3508805
Driver	450mA	450mA	450mA	450mA
Power	71W	104W	71W	104W
Total lumen output	8864Lm	13231Lm	7737Lm	11157Lm
IP on driver	20	20	20	20
Product number w/dimming	108118-dim	108120-dim	108129-dim	108128-dim
Product number w/Dali	108118-dali	108120-dali	108129-dali	108128-dali

With 6000K Cree Diodes

	CrystalLed™ ARC 48	CrystalLed™ ARC 72	CrystalLed™ ARC 48 w/diffusor	CrystalLed™ ARC 72 w/diffusor
Product number	108115	108119	108126	108125
EL number	3508801	3508805	3508801	3508805
Driver	450mA	450mA	450mA	450mA
Power	71W	104W	71W	104W
Total lumen output	9997Lm	13453Lm	8840Lm	12650Lm
IP on driver	20	20	20	20
Product number w/dimming	108115-dim	108119-dim	108126-dim	108125-dim
Product number w/Dali	108115-dali	108119-dali	108126-dali	108125-dali

2200K / 3000K Cree Diodes can be order on request.



- High quality Cree XTE-HE diodes.
- Light engine is made with Norwegian aluminium from Hydral.
- Driver from market-leading company Philips.
- Can be delivered with DALI or dimming.
- Easily installed due to its low weight, flexible mounting options and easy click-on installation system.
- IP 20 on driver, IP 65/67 on light engine.
- Can be delivered with or without diffusor.

CrystalLed™ lamps are ideal for environments where precise and strong light output is required.

With a customized Dali-dimming system, the management of lamps is easy and efficient. You are able to divide the storage into zones or dim the light as required. An additional advantage is that CrystalLed™ heat sink ensures low surface heat, which minimizes fire risk and upholds safety.

The CrystalLed™ lamp itself also withstand extreme temperatures, from -40C to +87C. Where there are lots of action, and both people and production at high pace – CrystalLed™ is an obvious choice. It distributes the light evenly, resulting in better contrasts and contours that reduces risk of damaged goods and heightens employee safety.

Additionally, the robust and industrial lamp design suits a storage environment and blends nicely with the surroundings.



Onninen, Norway





## General technical data

Delivered w/ ceiling bracket. Wire or gateway bracket on request.

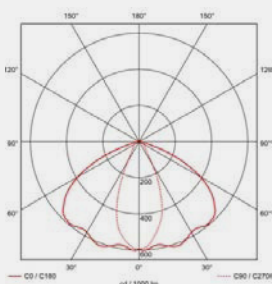
With 4500K Cree Diodes

	CrystalLed™ ARC 48	CrystalLed™ ARC 72	CrystalLed™ ARC 48 w/diffusor	CrystalLed™ ARC 72 w/diffusor
Product number	108118	108120	108129	108128
EL number	3508801	3508805	3508801	3508805
Driver	450mA	450mA	450mA	450mA
Power	71W	104W	71W	104W
Total lumen output	8864Lm	13231Lm	7737Lm	11157Lm
IP on driver	20	20	20	20
Product number w/dimming	108118-dim	108120-dim	108129-dim	108128-dim
Product number w/Dali	108118-dali	108120-dali	108129-dali	108128-dali

With 6000K Cree Diodes

	CrystalLed™ ARC 48	CrystalLed™ ARC 72	CrystalLed™ ARC 48 w/diffusor	CrystalLed™ ARC 72 w/diffusor
Product number	108115	108119	108126	108125
EL number	3508801	3508805	3508801	3508805
Driver	450mA	450mA	450mA	450mA
Power	71W	104W	71W	104W
Total lumen output	9997Lm	13453Lm	8840Lm	12650Lm
IP on driver	20	20	20	20
Product number w/dimming	108115-dim	108119-dim	108126-dim	108125-dim
Product number w/Dali	108115-dali	108119-dali	108126-dali	108125-dali

2200K / 3000K Cree Diodes can be order on request. Sealed diffusor is available for storage lamps, see specialized lamps.



- High quality Cree XTE-HE diodes.
- Light engine is made with Norwegian aluminium from Hydal.
- Driver from market-leading company Philips.
- Can be delivered with DALI or dimming.
- Easily installed due to its low weight, flexible mounting options and easy click-on installation system.
- IP 20 on driver, IP 65/67 on light engine.
- Can be delivered with or without diffusor.

Ledlight Group aims to cater to all needs. The specialized CrystalLed lamps are developed closely with our customers, and ensures that we can offer high-quality LED lamps to all environments.

The specialized CrystalLed lamps have a variety of mounting options and can be delivered with a range of different accessories. If you are unable to find a product that suits your needs, please contact us

Ledlight Group was preferred over other suppliers as they provided ASKO Norge AS with a tailor-made solution with both LED- and emergency lighting incorporated. The CrystalLed™ lamps have proven to considerably improve light output, and DALI dimming allows better user-control.

Lars Langøy, Manager of Operations, ASKO Norge AS



Ringshaugstranda, Norway





## General technical data

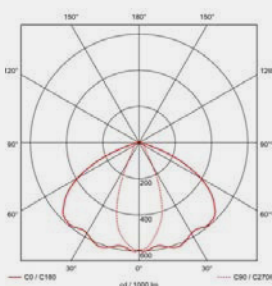
With 4500K Cree Diodes

	CrystalLed™ Street 56	CrystalLed™ 48 sealed w/diffusor	CrystalLed™ 72 sealed w/diffusor
Product number	108142		
EL number	3507336	3508801	3508805
Driver	450mA	450mA	450mA
Power	81W	71W	104W
Total lumen output	7462Lm	7737Lm	11827Lm
IP	65 / 67	20	20

With 6000K Cree Diodes

	CrystalLed™ Street 56	CrystalLed™ 48 sealed w/diffusor	CrystalLed™ 72 sealed w/diffusor
Product number	108140		
EL number	3507334	3508801	3508805
Driver	450mA	450mA	450mA
Power	81W	71W	104W
Total lumen output	7776Lm	8839Lm	11868Lm
IP	65 / 67	20	20

2200K / 3000K Cree Diodes can be order on request.



- High quality Cree XTE-HE diodes.
- Light engine is made with Norwegian aluminium.
- Drivers from market-leading companies Inventronics.
- Easily installed due to its low weight, flexible mounting options and easy click-on installation system.
- Can be delivered with DALI dimming.

With 4500K Cree Diodes

Product nr	Product Description 1-axis	Lenses	Driver	Watt	Lumens	Driver mounting
108238	48LED-60° directconnect, driver and 1-axis tilt aliminium	60 degrees	450mA	71W	11388Lm	Driver mounted on tiltbracket
108246	72LED-60° directconnect, driver and 1-axis tilt aliminium	60 degrees	450mA	104W	16682Lm	Driver mounted on tiltbracket
108254	96LED-60° directconnect, driver and 1-axis tilt aliminium	60 degrees	450mA	169W	27108Lm	Driver mounted on tiltbracket
108242	48LED-25° directconnect, driver and 1-axis tilt aliminium	25 degrees	450mA	71W	11388Lm	Driver mounted on tiltbracket
108250	72LED-25° directconnect, driver and 1-axis tilt aliminium	25 degrees	450mA	104W	16682Lm	Driver mounted on tiltbracket
108256	96LED-25° directconnect, driver and 1-axis tilt aliminium	25 degrees	450mA	169W	27108Lm	Driver mounted on tiltbracket
Product nr	Product Description 2-axis	Lenses	Driver	Watt	Lumens	
108240	48LED-60° 2-axis tilt aliminium bracket	60 degrees	450mA	71W	11388Lm	
108248	72LED-60° 2-axis tilt aliminium bracket	60 degrees	450mA	104W	16682Lm	
108256	96LED-60° 2-axis tilt aliminium bracket	60 degrees	450mA	169W	27108Lm	
108244	48LED-25° 2-axis tilt aliminium bracket	25 degrees	450mA	71W	11388Lm	
108252	72LED-25° 2-axis tilt aliminium bracket	25 degrees	450mA	104W	16682Lm	
108260	96LED-25° 2-axis tilt aliminium bracket	25 degrees	450mA	169W	27108Lm	
Product nr	Product Description 1-axis HighTemp Lenses	Lenses	Driver	Watt	Lumens	Driver mounting
108284	48LED-55° directconnect, driver, 1-axis tilt and HighTemp Lenses	55 degrees	552mA	71W	10913Lm	Driver mounted on tiltbracket
108285	72LED-55° directconnect, driver, 1-axis tilt and HighTemp Lenses	55 degrees	552mA	104W	15985Lm	Driver mounted on tiltbracket
108286	96LED-55° directconnect, driver, 1-axis tilt and HighTemp Lenses	55 degrees	552mA	169W	25975Lm	Driver mounted on tiltbracket
Product nr	Product Description 2-axis HighTemp Lenses	Lenses	Driver	Watt	Lumens	
108288	48LED-55° driver, 2-axis tilt with driver and HighTemp Lenses	55 degrees	552mA	71W	10913Lm	
108289	72LED-55° driver, 2-axis tilt with driver and HighTemp Lenses	55 degrees	552mA	104W	15985Lm	
108290	96LED-55° driver, 2-axis tilt with driver and HighTemp Lenses	55 degrees	552mA	169W	25975Lm	
Product nr	SAND Sealed	Lenses	Driver	Watt	Lumens	Driver mounting
108135-SAND	72LED-60° SAND 104W with driver and diffusor glass	60 degrees	450mA	104W	16682Lm	Optional



With 6000K Cree Diodes

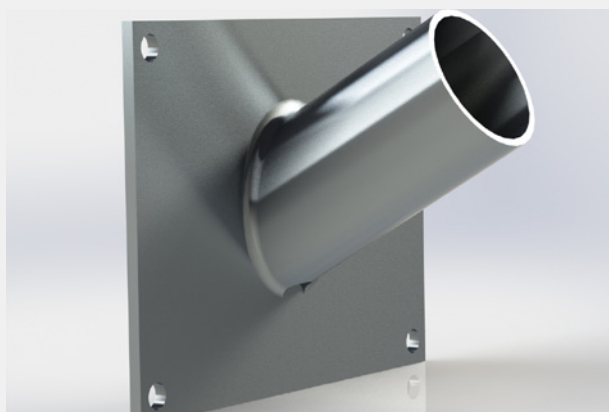
Product nr	Product Description 1-axis	Lenses	Driver	Watt	Lumens	Driver mounting
108239	48LED-60° directconnect, driver and 1-axis tilt aliminium	60 degrees	450mA	71W	11971Lm	Driver mounted on tiltbracket
108247	72LED-60° directconnect, driver and 1-axis tilt aliminium	60 degrees	450mA	104W	17535Lm	Driver mounted on tiltbracket
108255	96LED-60° directconnect, driver and 1-axis tilt aliminium	60 degrees	450mA	169W	28495Lm	Driver mounted on tiltbracket
108243	48LED-25° directconnect, driver and 1-axis tilt aliminium	25 degrees	450mA	71W	11971Lm	Driver mounted on tiltbracket
108251	72LED-25° directconnect, driver and 1-axis tilt aliminium	25 degrees	450mA	104W	17535Lm	Driver mounted on tiltbracket
108259	96LED-25° directconnect, driver and 1-axis tilt aliminium	25 degrees	450mA	169W	28495Lm	Driver mounted on tiltbracket
Product nr	Product Description 2-axis	Lenses	Driver	Watt	Lumens	
108241	48LED-60° 2-axis tilt aliminium bracket	60 degrees	450mA	71W	11971Lm	
108249	72LED-60° 2-axis tilt aliminium bracket	60 degrees	450mA	104W	17535Lm	
108257	96LED-60° 2-axis tilt aliminium bracket	60 degrees	450mA	169W	28495Lm	
108245	48LED-25° 2-axis tilt aliminium bracket	25 degrees	450mA	71W	11971Lm	
108253	72LED-25° 2-axis tilt aliminium bracket	25 degrees	450mA	104W	17535Lm	
108261	96LED-25° 2-axis tilt aliminium bracket	25 degrees	450mA	169W	28495Lm	
Product nr	Product Description 1-axis HighTemp Lenses	Lenses	Driver	Watt	Lumens	Driver mounting
	48LED-55° directconnect, driver, 1-axis tilt and HighTemp Lenses	55 degrees	552mA	71W	11466Lm	Driver mounted on tiltbracket
	72LED-55° directconnect, driver, 1-axis tilt and HighTemp Lenses	55 degrees	552mA	104W	16796Lm	Driver mounted on tiltbracket
108287	96LED-55° directconnect, driver, 1-axis tilt and HighTemp Lenses	55 degrees	552mA	169W	27293Lm	Driver mounted on tiltbracket
Product nr	Product Description 2-axis HighTemp Lenses	Lenses	Driver	Watt	Lumens	
	48LED-55° driver, 2-axis tilt with driver and HighTemp Lenses	55 degrees	552mA	71W	11466Lm	
	72LED-55° driver, 2-axis tilt with driver and HighTemp Lenses	55 degrees	552mA	104W	16796Lm	
	96LED-55° driver, 2-axis tilt with driver and HighTemp Lenses	55 degrees	552mA	169W	27293Lm	
Product nr	Product Description SAND Sealed	Lenses	Driver	Watt	Lumens	Driver mounting
108135-SAND-1	72LED-60° SAND 104W with driver and diffusor glass	60 degrees	450mA	104W	17535Lm	Optional

# Brackets

Standard brackets are normally included in the price of the lamp, but must be ordered separately. Tailor-made brackets are available for special projects, and the price is agreed separately and delivery times varies. Please note that pole size must be defined. There are optional pole sizes; 60mm and 76mm.

See below for standard brackets that are in the pricelist, including wire bracket (product number on request). These brackets will normally be held in stock and will be shipped according to standard delivery times.

Wall Bracket (Product number: 106455)



Pole Bracket (Product number: 108225)



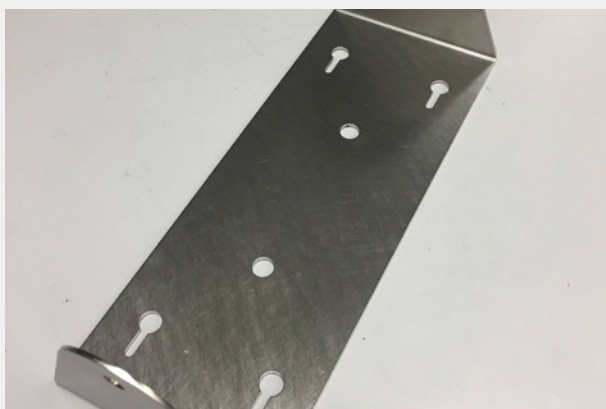
Ceiling Bracket (Product number on request)



Tower Bracket (Product number on request)



Tilt Bracket (Product number on request)





# Housing

CrystalLed lamps are suitable for a range of different housing options.  
Standard housing is ARC with or without diffusor and Roof. Cube can be ordered upon request.

ARC Housing w/ diffusor



ARC Housing without diffusor



Roof Housing



Cube Housing



\* 8 - 12 weeks delivery time.

# Dali

Light control systems offers significant benefits in terms of supporting user-control, light experience, and visual needs. There are a number of ways to implement intelligent light solutions, which reduces energy consumption, saves operational costs, upholds industry standards and are environmentally friendly:

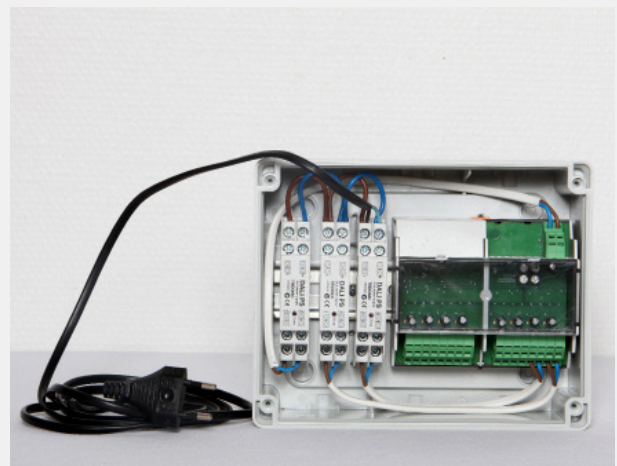
- Scheduled automatic shutoff
- Scheduled dimming of daylight aperture and working hours
- Management of different cable-zones, which allows the light to function only where needed

## What is DALI?

In any light control system, the ballasts and controllers must be able to speak and hear the same language. In the case of digital dimming systems, this language is either proprietary or an open standard. The Digital Addressable Lighting Interface (DALI) is an open standard. DALI as the communication standard therefore enables the digital components to communicate.

## What do you need?

- DALI card
- DALI operator panel (Standard: 5-button panel)
- DALI operator panel (DALI PMU dimmer)
- DALI operator panel (key panel)
- USB-cable
- DALI Distribution Box (only for more than 64 units)
- DALI-PS power supply (only one, if less than 64 units)
- Configurator



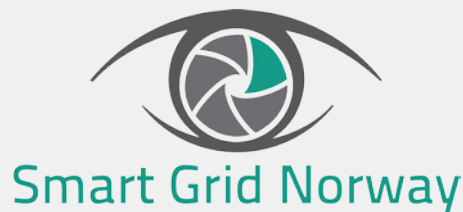
## Why DALI?

- DALI is a recognized international standard for lighting control systems.
- DALI has proven its reliability for many years, and will continue to develop and support the growing demands for professional lighting.
- The digital simplicity and flexibility that DALI provides enables customers to create solutions that are easy-to-use, robust, interoperable and affordable.
- The compatibility and interchangeability of different control modules from different manufacturers are reliable when using the DALI standard.
- The DALI system allows the customer to control light automatically or regulate it for its intended purpose.



# SmartGrid

Ledlight Group works with Smart Grid Norway to provide customers with leading technology. Smart Grid Norway tailor solutions for most industries where they provide custom software and dashboards.



## **INDUSTRIAL & COMMERCIAL**

Energy management system solutions enabling customers to:

- Optimize energy use
- Streamline operations
- Increase property value

## **UTILITIES**

Management systems, ICT communication infrastructure and PLC solutions enabling customers to:

- Make substations intelligent
- Reduce "Big Data" to "Less Data"
- Reduce operating costs

## **TELECOM**

- Broadcast and mobile network management
- Reduce operating and maintenance costs
- Reduce downtime with intelligent recover functions
- Automatic & manual remote control of transmitter stations
- Communication portfolio that covers Layer 1 to Layer 7

## **SOFTWARE DEVELOPMENT**

- Applications for monitoring and control
- One common SW platform independent of application needs
- Open and future proof technology
- Development projects
- UX design Development projects



Copenhagen Airport, Denmark

# LedlightGroup

Ole Deviks vei 6B, 0666 Oslo, Norway  
post@llg.no  
+47 40 00 63 26

[www.ledlightgroup.com](http://www.ledlightgroup.com)